

\$369,900 - 3212, 6 Merganser Drive, Chestermere

MLS® #A2217483

\$369,900

2 Bedroom, 2.00 Bathroom, 685 sqft

Residential on 0.00 Acres

Chelsea_CH, Chestermere, Alberta

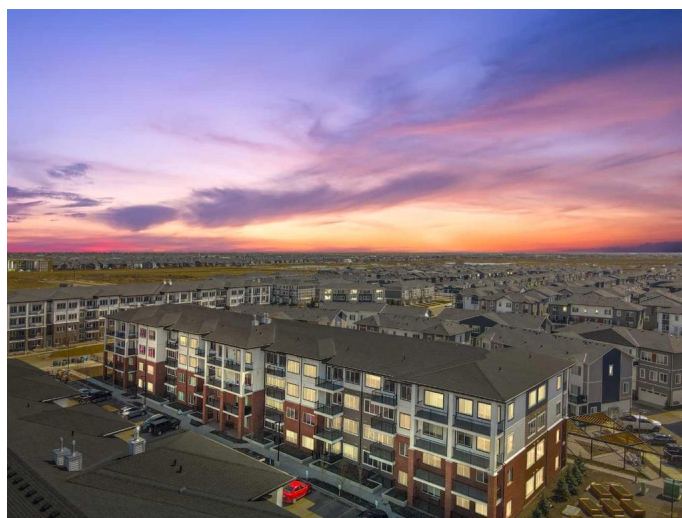
Welcome to this beautifully crafted 2-bedroom, 2-bathroom condo with a den and two titled parking stalls, located in the vibrant lake community of Chelsea, Chestermere. Built by TRUMAN, this home blends modern design, functionality, and luxuryâ€™perfect for first-time buyers, downsizers, or investors.

Enjoy the best of lake living just minutes from Chestermere Lake with beach access, boat launch, scenic walking trails, playgrounds, and parks. Daily conveniences are close by with easy access to Chestermere Station and Chestermere Crossing, where youâ€™ll find shopping, restaurants, and essential services.

Inside, the open-concept layout features a flexible den ideal for a home office, and premium finishes throughout. Youâ€™ll love the luxury vinyl plank flooring, soaring ceilings, and chef-inspired kitchenâ€™complete with full-height cabinetry, soft-close drawers, quartz countertops, stainless steel appliances, and a practical pantry. The eat-up island is perfect for casual meals or entertaining guests.

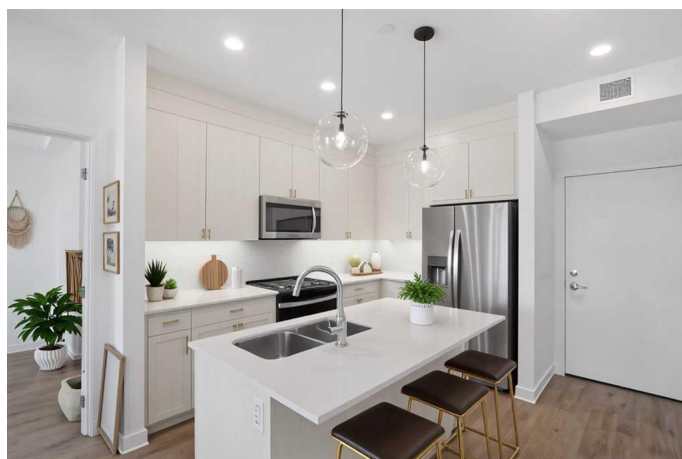
The spacious primary bedroom offers a walk-through closet and private 3-piece ensuite. A second bedroom, 4-piece main bath, and in-suite laundry add to the thoughtful layout.

Lockwood residents also enjoy exclusive access to a fully equipped fitness centre, an



6-3212 Merganser Dr W, Chestermere, AB

Main Floor Interior Area 685.23 sq ft



inviting owners' lounge, and convenient bike storage for active living.

Bright, stylish, and move-in ready—this home is your chance to embrace the small town living feel but only minutes from Calgary.

Live better. Live Chelsea.

Built in 2025

Essential Information

MLS® #	A2217483
Price	\$369,900
Bedrooms	2
Bathrooms	2.00
Full Baths	2
Square Footage	685
Acres	0.00
Year Built	2025
Type	Residential
Sub-Type	Apartment
Style	Single Level Unit
Status	Active

Community Information

Address	3212, 6 Merganser Drive
Subdivision	Chelsea_CH
City	Chestermere
County	Chestermere
Province	Alberta
Postal Code	T1X2Y2

Amenities

Amenities	Beach Access, Bicycle Storage, Elevator(s), Fitness Center, Parking, Boating, Dog Park
Parking Spaces	2
Parking	Stall

Interior

Interior Features	Kitchen Island, Open Floorplan, Walk-In Closet(s)
Appliances	Dishwasher, Dryer, Electric Stove, Microwave, Microwave Hood Fan, Refrigerator, Washer
Heating	Baseboard, Hot Water
Cooling	Sep. HVAC Units
# of Stories	4

Exterior

Exterior Features	Balcony, Courtyard
Roof	Membrane
Construction	Concrete, Wood Frame
Foundation	Poured Concrete

Additional Information

Date Listed	May 3rd, 2025
Days on Market	10
Zoning	Multi Family
HOA Fees Freq.	MON

Listing Details

Listing Office	Stonemere Real Estate Solutions
----------------	---------------------------------

Data is supplied by Pillar 9â„¢ MLS® System. Pillar 9â„¢ is the owner of the copyright in its MLS® System. Data is deemed reliable but is not guaranteed accurate by Pillar 9â„¢. The trademarks MLS®, Multiple Listing Service® and the associated logos are owned by The Canadian Real Estate Association (CREA) and identify the quality of services provided by real estate professionals who are members of CREA. Used under license.