

\$900,000 - 14 Lissington Drive Sw, Calgary

MLS® #A2219310

\$900,000

4 Bedroom, 2.00 Bathroom, 1,322 sqft
Residential on 0.14 Acres

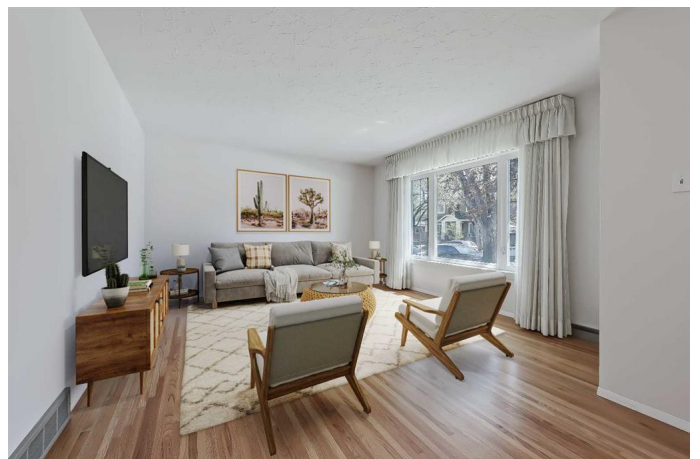
North Glenmore Park, Calgary, Alberta

Welcome to 14 Lissington Drive SW, a rare opportunity to own a beautifully maintained bungalow on one of the most desirable streets in Calgary's coveted North Glenmore Park. This 1,322 square foot residence seamlessly blends timeless character with thoughtful updates and exceptional future potential. (50x122 lot)

Upon entry, you're greeted by a sunlit living room anchored by a large picture window that bathes the space in natural light. The well-appointed kitchen features ample cabinetry and a convenient breakfast bar, opening gracefully into a striking rear extension with vaulted ceilings and skylights—creating a bright, airy atmosphere ideal for both everyday living and entertaining.

The main floor offers three comfortable bedrooms, while the updated bathroom includes a stacked washer and dryer for added functionality. The fully developed basement enhances the home's versatility with a spacious bedroom, a stylish recreational area, a second laundry zone, and abundant storage—perfect for guests, hobbies, or future suite development (subject to approval and permitting by the city).

Step outside into a private backyard retreat, where a beautifully maintained garden and charming seating area invite quiet mornings or summer evenings spent outdoors.



This exceptional location is just steps from Lakeview Golf Course, Aforza Tennis, the off-leash dog park, Glenmore Athletic Park, the Aquatic Centre and the Elbow River pathway system—offering an active, outdoor lifestyle surrounded by nature. You™re also just minutes from the vibrant Marda Loop district, home to an array of restaurants, caf  s, and boutique shops. Families will appreciate the walkability to top-rated schools, including Rundle Academy, Altadore School, and Central Memorial High.

Whether you're looking to customize your dream home or seeking to redevelop on one of North Glenmore™s most prestigious streets, this property offers a rare and compelling opportunity in one of Calgary™s most sought-after inner-city neighbourhoods.

Built in 1959

Essential Information

MLS® #	A2219310
Price	\$900,000
Bedrooms	4
Bathrooms	2.00
Full Baths	2
Square Footage	1,322
Acres	0.14
Year Built	1959
Type	Residential
Sub-Type	Detached
Style	Bungalow
Status	Active

Community Information

Address	14 Lissington Drive Sw
Subdivision	North Glenmore Park
City	Calgary

County	Calgary
Province	Alberta
Postal Code	T3E 5E1

Amenities

Parking Spaces	1
Parking	Single Garage Detached
# of Garages	1

Interior

Interior Features	Breakfast Bar, Built-in Features, High Ceilings, Skylight(s)
Appliances	Dishwasher, Dryer, Freezer, Gas Stove, Microwave, Range Hood, Refrigerator, Washer, Washer/Dryer Stacked
Heating	Forced Air, Natural Gas
Cooling	None
Has Basement	Yes
Basement	Finished, Full

Exterior

Exterior Features	Garden, Private Yard
Lot Description	Back Lane, Back Yard
Roof	Asphalt Shingle
Construction	Wood Frame
Foundation	Poured Concrete

Additional Information

Date Listed	May 9th, 2025
Days on Market	2
Zoning	R-CG

Listing Details

Listing Office	Royal LePage Benchmark
----------------	------------------------

Data is supplied by Pillar 9â„¢ MLSÂ® System. Pillar 9â„¢ is the owner of the copyright in its MLSÂ® System. Data is deemed reliable but is not guaranteed accurate by Pillar 9â„¢. The trademarks MLSÂ®, Multiple Listing ServiceÂ® and the associated logos are owned by The Canadian Real Estate Association (CREA) and identify the quality of services provided by real estate professionals who are members of CREA. Used under license.