

# \$519,900 - 708 Edgefield Crescent, Strathmore

MLS® #A2221515

**\$519,900**

3 Bedroom, 3.00 Bathroom, 1,740 sqft  
Residential on 0.09 Acres

Edgefield, Strathmore, Alberta

Welcome to Edgefield â€” A Beautifully  
Updated Home in One of Strathmoreâ€™s  
Most Desirable Communities!

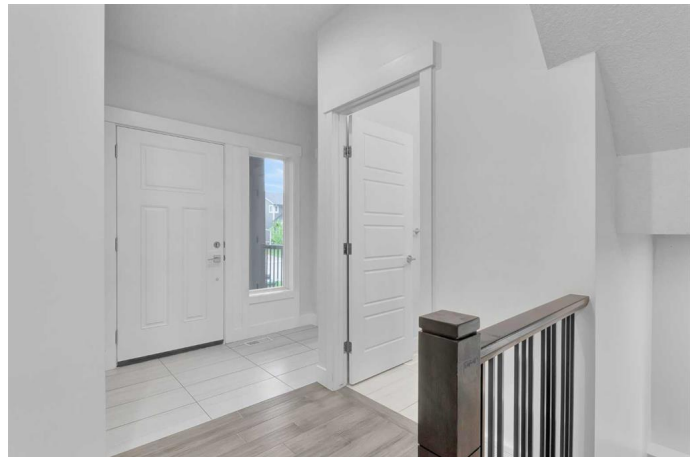
Nestled on a quiet street in the family-friendly neighborhood of Edgefield, this stunning semi-detached 2-storey home offers over 1,700 sq ft of thoughtfully designed living space, complete with 3 spacious bedrooms, 2.5 bathrooms, and a double attached garage.

Step inside and be greeted by a bright, open-concept main floor featuring fresh interior paint, durable vinyl flooring, and large windows that flood the space with natural light. The modern kitchen is a true showstopper, boasting brand new stainless steel appliances, sleek white cabinetry, quartz countertops, a large island perfect for entertaining, and a walk-through pantry for added functionality and style.

Upstairs, enjoy all-new carpeting throughout and find three generously sized bedrooms, including a tranquil primary suite with a luxurious 5-piece ensuite and a walk-in closet.

The unfinished basement is ready for your visionâ€”create a home gym, recreation room, or additional living area tailored to your lifestyle.

Step outside to your private backyard oasis, complete with a spacious deck ideal for



relaxing or hosting guests on warm summer days.

Conveniently located just minutes from schools, playgrounds, shopping, and dining, this home combines comfort, style, and unbeatable value in one of Strathmore’s most sought-after communities.

Don’t miss this move-in-ready gem—schedule your private showing today!

Built in 2015

**Essential Information**

|                |                        |
|----------------|------------------------|
| MLS® #         | A2221515               |
| Price          | \$519,900              |
| Bedrooms       | 3                      |
| Bathrooms      | 3.00                   |
| Full Baths     | 2                      |
| Half Baths     | 1                      |
| Square Footage | 1,740                  |
| Acres          | 0.09                   |
| Year Built     | 2015                   |
| Type           | Residential            |
| Sub-Type       | Semi Detached          |
| Style          | 2 Storey, Side by Side |
| Status         | Active                 |

**Community Information**

|             |                        |
|-------------|------------------------|
| Address     | 708 Edgefield Crescent |
| Subdivision | Edgefield              |
| City        | Strathmore             |
| County      | Wheatland County       |
| Province    | Alberta                |
| Postal Code | T1P 0G1                |

**Amenities**

|                |                        |
|----------------|------------------------|
| Parking Spaces | 4                      |
| Parking        | Double Garage Attached |

# of Garages 2

### Interior

Interior Features Ceiling Fan(s), Pantry, Quartz Counters, Soaking Tub, Walk-In Closet(s)  
Appliances Dishwasher, Electric Stove, Range Hood, Refrigerator  
Heating Forced Air  
Cooling None  
Fireplace Yes  
# of Fireplaces 1  
Fireplaces Gas  
Has Basement Yes  
Basement Full, Unfinished

### Exterior

Exterior Features Other  
Lot Description Back Yard, Low Maintenance Landscape  
Roof Asphalt Shingle  
Construction Stone, Vinyl Siding, Wood Frame  
Foundation Poured Concrete

### Additional Information

Date Listed May 16th, 2025  
Days on Market 32  
Zoning R2

### Listing Details

Listing Office 2% Realty

Data is supplied by Pillar 9â„¢ MLS® System. Pillar 9â„¢ is the owner of the copyright in its MLS® System. Data is deemed reliable but is not guaranteed accurate by Pillar 9â„¢. The trademarks MLS®, Multiple Listing Service® and the associated logos are owned by The Canadian Real Estate Association (CREA) and identify the quality of services provided by real estate professionals who are members of CREA. Used under license.