

# \$749,900 - 410 Panatella Square Nw, Calgary

MLS® #A2237880

**\$749,900**

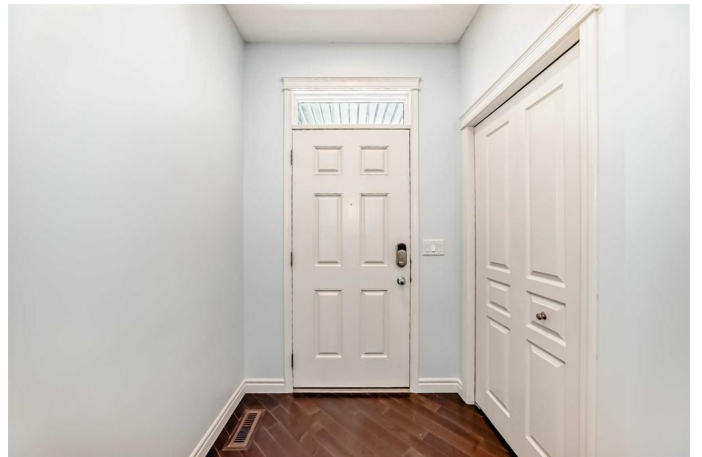
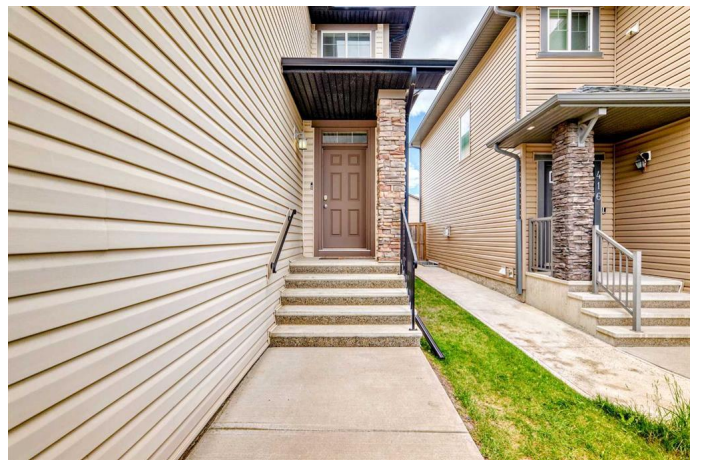
4 Bedroom, 3.00 Bathroom, 2,110 sqft  
Residential on 0.09 Acres

Panorama Hills, Calgary, Alberta

Welcome to this spacious and inviting two-storey home offering over 2,867 sq.ft. of developed living space, nestled in the heart of the mature and established Panorama Hills community. The main floor features an open foyer with 9 ft ceiling, a bright den perfect for a home office, and a modern kitchen with a large island, pantry, and elegant quartz countertops. The cozy living room is complete with a corner fireplace - ideal for family gatherings. Upstairs you'll find three generously sized bedrooms, including a primary suite with a luxurious ensuite featuring a separate shower and soaker tub. A huge bonus room opens onto a private balcony - perfect for enjoying your morning coffee. A full bathroom completes the upper level. The recently developed basement (only two years old) offers even more living space with a spacious recreation room and a 4th bedroom - perfect for guest or a growing family. additional upgrades include fresh interior and exterior paint, new carpet throughout, new roof (upgrade Level 4), New Siding (north & west sides), Water Tank (2024) and New Eaves. Enjoy the convenience of a double attached garage, easy access to Stoney Trail, nearby walking paths, schools, and parks - all within a family-friendly, mature neighborhood. Don't miss this move-in ready home -perfect for comfortable family living.

Built in 2010

## Essential Information



|                |             |
|----------------|-------------|
| MLS® #         | A2237880    |
| Price          | \$749,900   |
| Bedrooms       | 4           |
| Bathrooms      | 3.00        |
| Full Baths     | 2           |
| Half Baths     | 1           |
| Square Footage | 2,110       |
| Acres          | 0.09        |
| Year Built     | 2010        |
| Type           | Residential |
| Sub-Type       | Detached    |
| Style          | 2 Storey    |
| Status         | Active      |

### **Community Information**

|             |                         |
|-------------|-------------------------|
| Address     | 410 Panatella Square Nw |
| Subdivision | Panorama Hills          |
| City        | Calgary                 |
| County      | Calgary                 |
| Province    | Alberta                 |
| Postal Code | T3K 0T7                 |

### **Amenities**

|                |                        |
|----------------|------------------------|
| Amenities      | Clubhouse              |
| Parking Spaces | 4                      |
| Parking        | Double Garage Attached |
| # of Garages   | 2                      |

### **Interior**

|                   |   |
|-------------------|---|
| Interior Features | Granite Counters, High Ceilings, Kitchen Island, No Smoking Home, Open Floorplan, Pantry, French Door |
| Appliances        | Dishwasher, Dryer, Electric Stove, Refrigerator, Washer, Window Coverings                             |
| Heating           | Forced Air, Natural Gas   |
| Cooling           | None  |
| Fireplace         | Yes   |
| # of Fireplaces   | 1   |
| Fireplaces        | Gas, Living Room, Mantle  |
| Has Basement      | Yes   |

Basement Finished, Full

## Exterior

Exterior Features Balcony, Private Yard, Storage, Lighting  
Lot Description Back Yard, Landscaped, Rectangular Lot  
Roof Asphalt Shingle  
Construction Vinyl Siding, Wood Frame  
Foundation Poured Concrete

## Additional Information

Date Listed July 9th, 2025  
Days on Market 25  
Zoning R-G  
HOA Fees 263  
HOA Fees Freq. ANN

## Listing Details

Listing Office Grand Realty

Data is supplied by Pillar 9â„¢ MLSÂ® System. Pillar 9â„¢ is the owner of the copyright in its MLSÂ® System. Data is deemed reliable but is not guaranteed accurate by Pillar 9â„¢. The trademarks MLSÂ®, Multiple Listing ServiceÂ® and the associated logos are owned by The Canadian Real Estate Association (CREA) and identify the quality of services provided by real estate professionals who are members of CREA. Used under license.